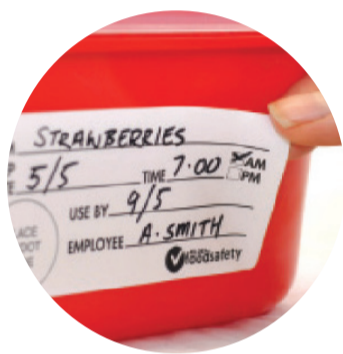


Food Label Adhesive Guide

Food labels can have four different types of adhesive; removable, permanent, dissolvable and durable. Follow the below guide to learn the appropriate application of each label type.



REMOVABLE LABELS

- Most popular adhesive
- Easy to apply and remove
- Remove before washing to avoid sticky label residue

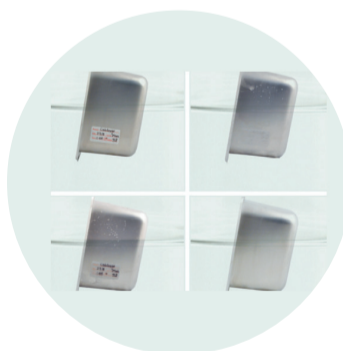
Easy to Remove	Safe for Freezer	Moisture Resistance	Minimum Application Temperature	Working Temperature Range
✓✓	✓✓	✓	- 12°C	-12°C to 71°C



PERMANENT LABELS

- Ideal for packaging that will be discarded
- Apply to dry surfaces before wetting or freezing
- A very aggressive adhesive
- Permanent labels cannot be removed

Easy to Remove	Safe for Freezer	Moisture Resistance	Minimum Application Temperature	Working Temperature Range
	✓✓✓	✓	- 3°C	- 53°C to 71°C



DISSOLVABLE LABELS

- Labels will dissolve once immersed in water of any temperature
- Biodegradable
- Labels not suitable for fridge or freezer applications

Easy to Remove	Safe for Freezer	Moisture Resistance	Minimum Application Temperature	Working Temperature Range
✓✓✓			- 1°C	- 40°C to 80°C



DURABLE LABELS

- Water resistant
- Ideal for fridge and freezer use
- Easy to remove after washing
- Will not tear

Easy to Remove	Safe for Freezer	Moisture Resistance	Minimum Application Temperature	Working Temperature Range
✓✓✓	✓✓✓	✓✓✓	-5°C	-30°C to 60°C